



CLASSIC COAT™

Changes or Renews Vinyl and Leather

FORD MOTOR COMPANY



ZUEA Midnight Black
SEM No. 17013



ZUBA Lt. Graphite
SEM No. 17023



BJAA Lt. Parchment
SEM No. 17033



ZUCA Med. Graphite
SEM No. 17043



BJCA Med. Parchment
SEM No. 17053



AYCA Med. Prairie Tan
SEM No. 17063



ZU4A Med. Dk. Graphite
SEM No. 17073



ZU5A Dk. Graphite
SEM No. 17083

GENERAL MOTORS CORPORATION



848 Black
SEM No. 17093



9780 Dk. Gray
SEM No. 17103



7701 Graphite
SEM No. 17113



9781 Lt. Gray
SEM No. 17123



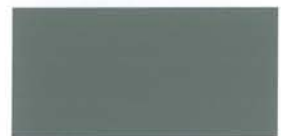
9772 Lt. Neutral
SEM No. 17133



101E Lt. Oak
SEM No. 17143



9777 Med. Beige
SEM No. 17153



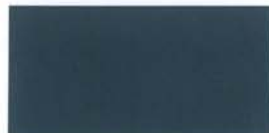
110D Med. Dk. Pewter
SEM No. 17163



9779 Med. Gray
SEM No. 17173



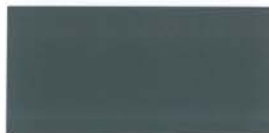
195A Med. Neutral
SEM No. 17183



173B Navy
SEM No. 17193



149B Shale
SEM No. 17203



9902 Very Dk. Gray
SEM No. 17213



642H Very Dk. Pewter
SEM No. 17223

DAIMLER CHRYSLER MOTORS



AZ Agate
SEM No. 17233



L5 Taupe
SEM No. 17243



L2 Lt. Taupe
SEM No. 17253

HONDA



Classy Gray
SEM No. 17263



Mild Beige
SEM No. 17273

TOYOTA



Oak
SEM No. 17283



Ivory
SEM No. 17293



Blue Gray
SEM No. 17303

ACURA



Tan
SEM No. 17313

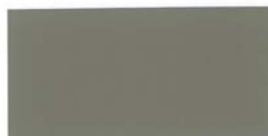


Creamy Ivory
SEM No. 17323



Charcoal
SEM No. 17333

BMW



Neutral
SEM No. 17343



Silver Gray
SEM No. 17353



The Right Choice

SEM PRODUCTS, INC., 651 Michael Wylie Dr., Charlotte, NC 28217-1546

704-522-1006 · 800-831-1122

www.sem.ws